



FHP Manufacturing Co.
 601 N.W. 65th Court
 Fort Lauderdale, FL 33309
 Phone: (954) 776-5471
 Fax: (800) 776-5529
<http://www.bosch-climate.us>



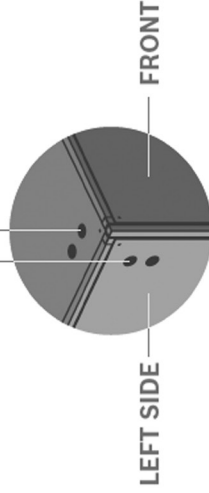
TW122 Series Two Stage Reverse Cycle Chillers



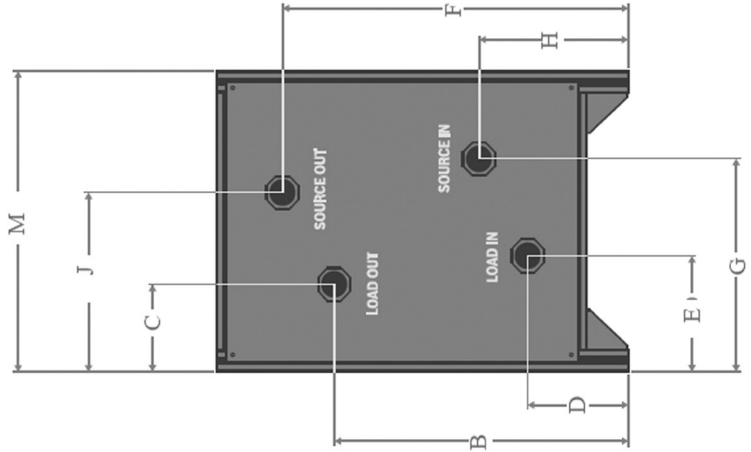
MODEL	Dimensions												
	A	B	C	D	E	F	G	H	J	K	L	M	Water Conn.
TW122	37.50	27.62	7.00	8.38	9.25	33.50	20.75	13.50	17.50	3.50	46.00	28.00	1 1/4" FPT

NOTES: All dimensions within +/- 0.125".
 Specifications subject to change without notice.

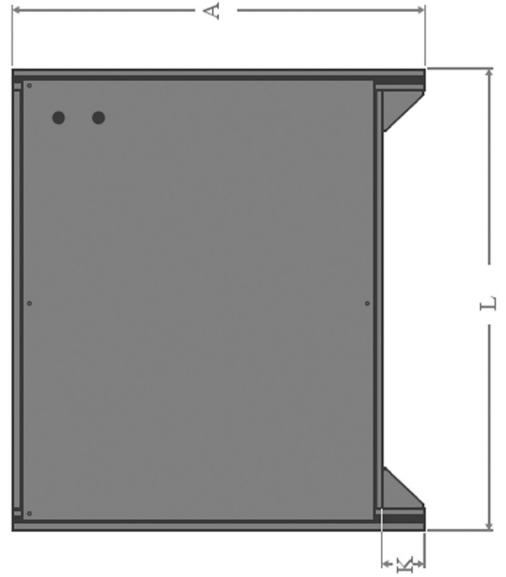
ELECTRICAL CONNECTIONS



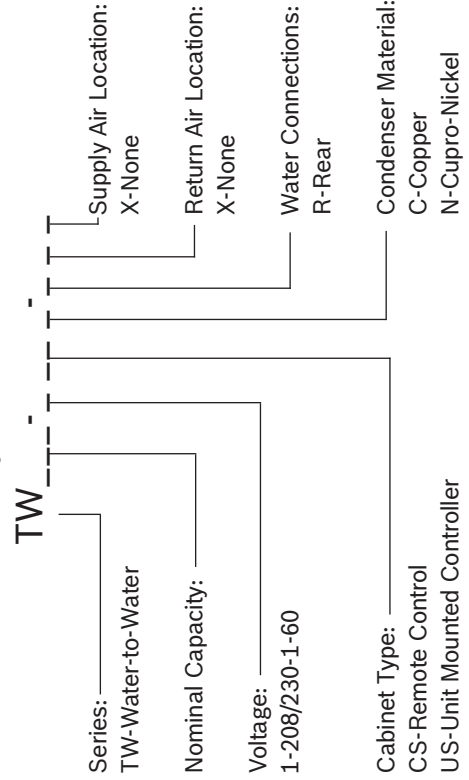
UNIT REAR



LEFT SIDE



TW Series Reverse Cycle Chiller Nomenclature



BOSCH WATER COOLED CHILLERS AND LOW TEMP BOILERS
SPECIFICATION DATA SHEET

TW122
 TW SERIES

ELECTRICAL SPECIFICATIONS

Electrical Characteristics	Elect. Symbol	Compressor X2		Min. Circuit Ampacity	Max. Fuse Size
		RLA	LRA		
208-230/1/60	-1	28.3	178	63.7	90

FLUID FLOW & PRESSURE DROP

Chilled Fluid Side (@ 44°F)		Cond. Fluid Side (@ 104°F)	
Flow (GPM)	ΔP (FOH)	Flow (GPM)	ΔP (FOH)
18	5.4	18	4.7
22	7.7	22	6.7
26	10.5	26	9.1
30	13.6	30	11.9
34	17.0	34	14.9



CHILLER PERFORMANCE - FULL LOAD

Based on 25 GPM load and 30 GPM source fluid flow.

Leaving Load Fluid (°F)	Entering Source Fluid (°F)	Total Capacity (Tons)	Total Capacity (MBtuH)	Power Input (kW)	EER	Heat Rejection (MBtuH)
40°	75°	9.33	111.93	6.73	16.64	134.88
	80°	9.09	109.10	7.15	15.26	133.49
	85°	8.85	106.20	7.60	13.98	132.12
	90°	8.60	103.21	8.08	12.78	130.76
	95°	8.34	100.11	8.59	11.65	129.42
42°	75°	9.67	116.06	6.74	17.23	139.05
	80°	9.43	113.12	7.16	15.80	137.55
	85°	9.18	110.12	7.61	14.47	136.07
	90°	8.92	107.03	8.09	13.23	134.62
	95°	8.65	103.83	8.60	12.07	133.18
44°	75°	10.03	120.31	6.75	17.82	143.34
	80°	9.77	117.28	7.17	16.35	141.75
	85°	9.51	114.16	7.62	14.98	140.16
	90°	9.25	110.95	8.10	13.70	138.59
	95°	8.97	107.65	8.61	12.50	137.04
45°	75°	10.21	122.47	6.76	18.13	145.53
	80°	9.95	119.37	7.18	16.63	143.87
	85°	9.68	116.21	7.63	15.23	142.24
	90°	9.41	112.95	8.11	13.93	140.61
	95°	9.13	109.59	8.62	12.71	139.00
46°	75°	10.39	124.68	6.76	18.43	147.76
	80°	10.13	121.53	7.19	16.91	146.06
	85°	9.86	118.30	7.64	15.49	144.36
	90°	9.58	114.98	8.11	14.17	142.67
	95°	9.30	111.57	8.63	12.93	141.01
48°	75°	10.76	129.18	6.78	19.06	152.31
	80°	10.49	125.91	7.20	17.48	150.49
	85°	10.21	122.56	7.65	16.02	148.67
	90°	9.93	119.12	8.13	14.65	146.86
	95°	9.63	115.60	8.64	13.37	145.08
50°	75°	11.15	133.81	6.79	19.69	156.99
	80°	10.87	130.42	7.22	18.06	155.05
	85°	10.58	126.94	7.67	16.55	153.11
	90°	10.28	123.40	8.15	15.15	151.20
	95°	9.98	119.73	8.66	13.83	149.28

HEATING PERFORMANCE

Based on 25 GPM load and 30 GPM source fluid flow.

Leaving Load Fluid (°F)	Entering Source Fluid (°F)	Total Capacity (MBtuH)	Power Input (kW)	COP	Heat of Abs. (MBtuH)
100°	35°	110.92	8.21	3.96	82.90
	40°	118.43	8.17	4.25	90.54
	50°	134.86	8.10	4.88	107.23
	60°	153.37	8.03	5.60	125.96
	70°	174.16	7.98	6.40	146.94
110°	35°	109.84	9.33	3.45	77.99
	40°	117.03	9.28	3.69	85.36
	50°	132.74	9.19	4.23	101.39
	60°	150.41	9.10	4.84	119.35
	70°	170.28	9.03	5.52	139.45
120°	35°	108.91	10.65	3.00	72.58
	40°	115.77	10.58	3.21	79.66
	50°	130.72	10.46	3.66	95.04
	60°	147.53	10.34	4.18	112.23
	70°	166.42	10.25	4.76	131.45
125°	35°	108.52	11.39	2.79	69.66
	40°	115.20	11.31	2.98	76.59
	50°	129.76	11.17	3.40	91.65
	60°	146.12	11.04	3.88	108.45
	70°	164.52	10.93	4.41	127.24

Units are complete packages featuring 2 stage operation and containing refrigeration compressor, reversing valve, expansion valve metering device and water to refrigerant heat exchangers. Also included are safety controls: Overload protection for compressor, high and low refrigerant pressure switches and a lock-out control circuit.

FHP Manufacturing Company
 601 N.W. 65th Court
 Fort Lauderdale, FL 33309
 Phone: (954) 776-5471 Fax: (800) 776-5529
<http://www.bosch-climate.us>